



YHTEISKUNTATIETEELLINEN TIETOARKISTO  
FINLANDS SAMHÄLLSVETENSKAPLIGA DATAARKIV  
FINNISH SOCIAL SCIENCE DATA ARCHIVE

Postal address:

FSD, 33014 University of Tampere, Finland

Visiting address:

Åkerlundinkatu 5 B, 4th floor, Tampere

FSD User Services:

asiakaspalvelu.fsd@uta.fi

Office:

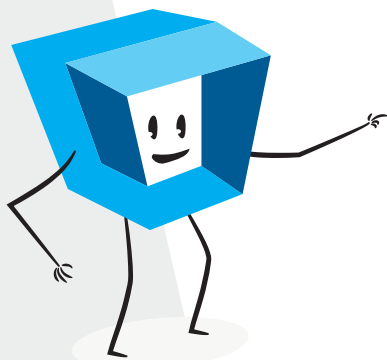
fsd@uta.fi

Data Service Portal Aila:

<https://services.fsd.uta.fi/>

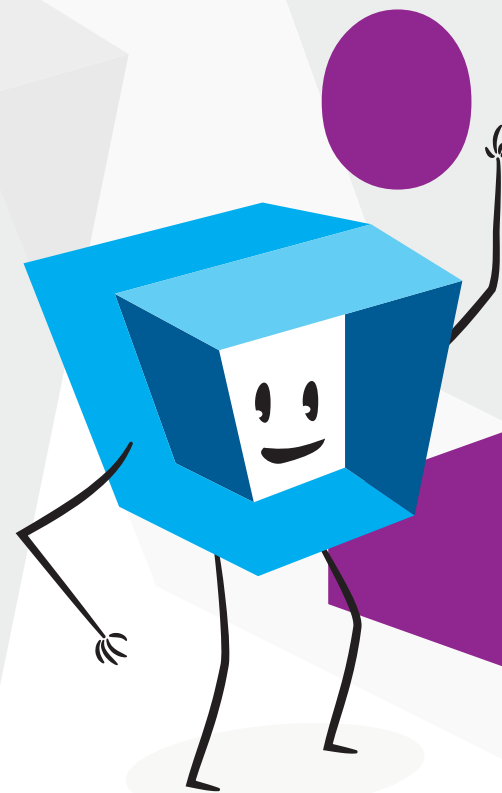
Finnish Social Science Data Archive:

<http://www.fsd.uta.fi/en/>



### Data Service Portal Aila

The Finnish Social Science Data Archive created the data service portal in the FSD Upgrade project funded by the Academy of Finland.

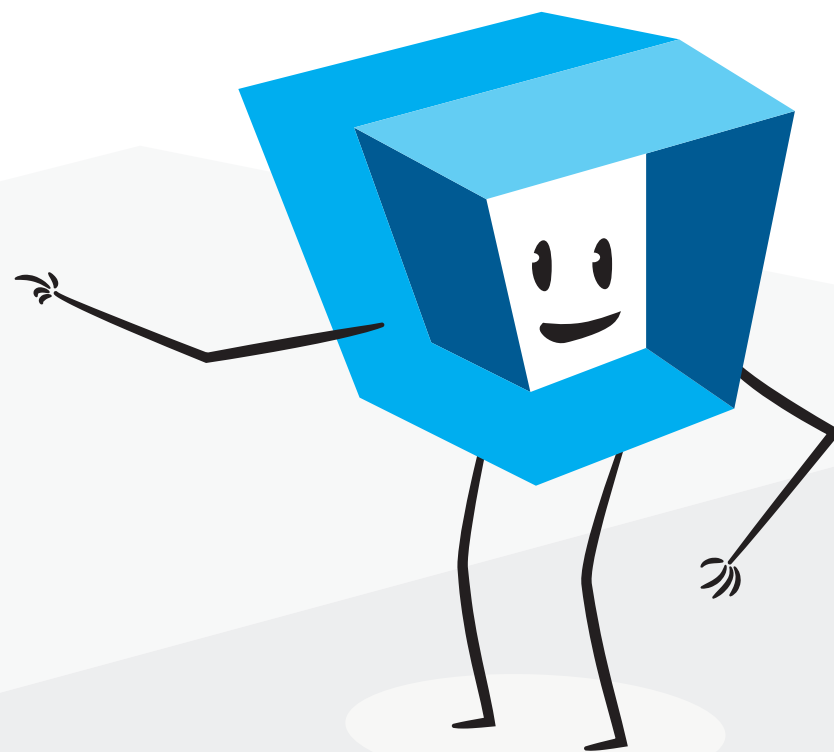


# Download data online

# Aiila

## EASY ONLINE ACCESS TO DATA

The Data Service Portal Aila provides access to the research data holdings of the Finnish Social Science Data Archive (FSD). Registered users can download data online, free of charge, according to the conditions set for each dataset.



### ENHANCED SEARCH FEATURES

Users can browse the data catalogue or search for data in a variety of ways. Searching and browsing do not require registration.

Aila provides three search interfaces: study level search, variable search and expert search. You can search all fields or restrict the search to a particular field. Searching question texts or response alternatives is possible as well as selecting the language or data type.

### ONLINE DATA DOWNLOAD

You need to register with Aila to be able to download data online. If you are a student or staff member in a Finnish university or polytechnic, you can register using your personal username and passwords issued to you by your institution (HAKA authentication). If your home institution is not a HAKA federation member, you can apply for a username through FSD User Services.

The FSD translates data into English for non-Finnish researchers on request, and many are already translated.

### TERMS AND CONDITIONS FOR DATA USE

Access conditions for datasets vary. A few datasets are openly available for all users. Many datasets are available for research, teaching and study, some for research only. Sometimes access requires permission from the data depositor.

If the data requires permission, you can ask for it through Aila. FSD User Services will let you know whether permission has been granted and you can download the data.

### DISSEMINATE YOUR DATA THROUGH AILA

If you want to enhance the availability of your own data, offer your data to be archived at the FSD. The archive will take care of long-term preservation and provide access to the data for other researchers through Aila. This is a good way to increase the impact of your research. If you are interested, contact FSD User Services!